

# seating

When it comes to basic seating needs, look no further than Freeman. Our wide array of well-designed modern chairs, armchairs and stools will serve your show space requirements.

## diva series

Natural blonde wood and matte chrome finish highlight this sleek Italian design.

### diva counter stool

17"W 16"L 36"H – N71092

The intermediate 25" seating height makes this stool ideal for theater or demo areas.

### diva chair

18"W 16"L 31"H – N71091

A natural complement to modern exhibit designs.



### forestdale chair

21"W 21"L 31"H – N71085

Padded seat and back in distinct geometric fabric with a sturdy lightweight frame.



### director stool

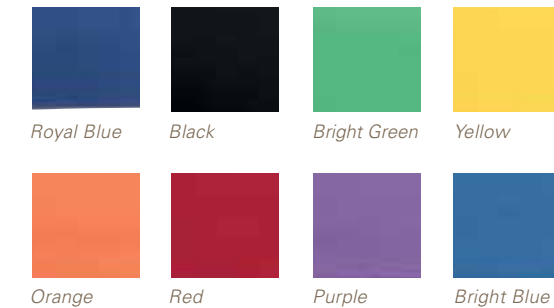
17"W 24"L 45"H – N710142

### director chair

17"W 24"L 32"H – N71042

### custom imprinting

Ask us about custom logo imprinting on the Director Chair or Stool back fabric. – N710998



### cherry barrel chair

Cranberry or Taupe

23"W 22"L 29"H – N71038

Traditional style in a cherry finish with classic fabric pattern options.



### diplomat chair

Black Diamond Fabric

25"W 28"L 36"H – N710144

Comfortable, yet compact for office or conference table seating.



### santana armchair

24"W 20"L 31"H – N710102

Modern styling with ergonomic shape; as striking as it is comfortable.



**gray gaslift stool**

24"W 20"L 46"H  
With Arms – N71048  
No Arms – N71047

**gray gaslift chair**

26"W 20"L 38"H  
With Arms – N71046  
No Arms – N71045

Telescoping height  
adjustment; five-caster  
base rolls with ease.



**executive chair**  
*Black Tweed*  
28"W 25"L 45"H – N71044



**black diamond side chair**  
21"W 23"L 32"H – N71089

**black diamond stool** ▶  
22"W 18"L 46"H – N71088

**black diamond armchair**  
20"W 21"L 33"H – N71090



soho bistro table (page 8)

**bugle base chair**

*Black or Blue Tweed*  
21"W 20"L 32"H – N71041



Bugle Base Table (page 8)

**casey padded stool**

*Black or Gray Fabric*  
20"W 21.5"L 42.5"H – C210112



**carson armchair**

*Blue, Black or Gray Fabric*  
21"W 20"L 33"H – C210101



**opal side chair**

*White*  
20"W 19"L 30"H – C210105



For ideas on furniture pairings, go to [www.freemanco.com/furniturepairing](http://www.freemanco.com/furniturepairing)

# lounging seating

Give your exhibit a casual yet practical look with Freeman superior lounge seating. Pick from a large selection of sofas, loveseats, chairs and barstools that are sure to take your exhibit design to the next level.



### signature loveseat

*Black*  
33"W 60"L 33"H – N73091  
Deeply comfortable sofa-style seating in a sleek, contemporary shape.

### signature chair

*Black*  
33"W 35"L 33"H – N71093



### kennedy sectional series

*Blue or Black Tweed*  
Flexible sofa-style seating in a variety of configurations.

### sofa, three-piece

31"W 87"L 28"H – N730313

### loveseat, two-piece

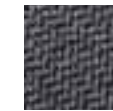
31"W 62"L 28"H – N730213

### corner section

31"W 31"L 28"H – N73013

### center section

31"W 25"L 28"H – N73014





**glass conference table**

*Black or Chrome Pedestal*  
42"W 42"L 30"H – N72015  
Rounded square glass top is supported by stylish metal frame in a choice of two colors.

**cherry cocktail table**

19"W 36"L 17"H – N72026

**cherry end table**

20"W 20"L 20"H – N72027

# tables

What Freeman always brings to the table is professionalism, and nothing says more about your meeting space and/or show site than your surfaces and tabletops. Choose from modern glass conference tables, traditional cocktail, end tables and much more.



**pedestal tables**

A range of tabletop sizes and materials with pedestals in various heights to fit any space.

**soho series**

Black-Top Mini	18"H x 18"W	N72066
Black-Top Cafe	30"H x 24"W	N72069
Black-Top Bistro	42"H x 24"W	N72070
Black-Top Cafe	30"H x 36"W	N72067
Black-Top Bistro	42"H x 36"W	N72068

**chelsea series**

Butcher Block-Top Cafe	30"H x 30"W	N72063
	30"H x 36"W	N72064
Butcher Block-Top Bistro	42"H x 30"W	N720163
	42"H x 36"W	N720164

**metro series**

*Black*

**slate end table**

20"W 20"L 17"H – N72029

**slate cocktail table**

20"W 40"L 15"H – N72028



**studio series**

**black end table**

17"W 17"L 18"H – C115104

**black cocktail table**

36"W 20"L 15"H – C115103

**bugle base table**

*White*

36"W 27"H – N72065



# office furniture

When it's time to set up office, Freeman offers a wide selection of superior, professional pieces in eye-catching shapes and styles to suit any budget and/or design essential. From classic credenzas and bookcases to professional seating, we've got all your office furniture requirements.



**milano table**  
42"W 84"L 29"H  
*Blonde Top with Black Base* – N72093  
*Black Top with Black Base* – N72092

The latest seven-foot conference table by Freeman features clean curved lines and a wealth of work space.

**luna table**  
36"W 72"L 29"H  
*Black Top with Black Base* – N72094

This contemporary six-foot conference table or writing desk comes with a black laminate top.



Cherry Tables (page 7)  
Cherry Barrel Chairs (page 2)  
Black Table Lamp (page 14)



**hemingway writing table**  
*Black*  
24"W 49"L 29"H – N720191

## office series

*Cherry or Oak*

**five-foot desk**  
30"W 60"L 30"H  
Cherry – N74061  
Oak – N74071



**credenza**  
16"W 60"L 30"H  
Cherry – N74064  
Oak – N74074

**bookcase**  
12"W 36"L 72"H  
Cherry – N74065  
Oak – N74075



For ideas on furniture pairings, go to [www.freemanco.com/furniturepairing](http://www.freemanco.com/furniturepairing)



# display

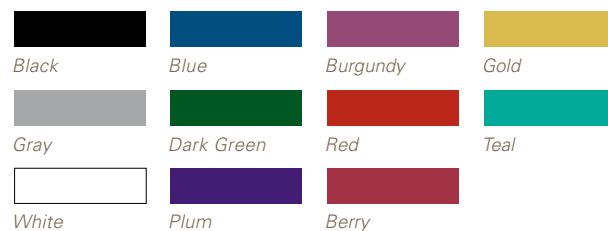
Some of the most essential elements of your exhibit are the surfaces on which you display your show materials. That's why we have an appealing variety of displays, from standing cylinders to sleek computer desks to draped tables and counters, to ensure your show space will be both attractive and interactive.



## draped or undraped table counters

Colored draping includes white vinyl top and pleated skirt on three sides. Fourth-side draping is available. Undraped tables include white vinyl tops.

tables (30" height)	3'	4'	6'	8'
Draped	C130330	C130430	C130630	C130830
Draped on fourth side			C12404630	C12404830
Undraped	C131330	C131430	C131630	C131830
counters (42" height)				
Draped	C130342	C130442	C130642	C130842
Draped on fourth side			C12404642	C12404842
Undraped	C131342	C131442	C131642	C131842



Tabletop risers are also available in a variety of sizes. See order form for details.



## display cubes

Black

### 12" small

12"W 12"L 42"H – N75030

### 18" medium

18"W 18"L 36"H – N75031

### 24" large

24"W 24"L 42"H – N75032



## display cylinders

Black

### low

30"W 15"H – N75020

### medium

18"W 20"H – N75021

### high

24"W 36"H – N75022

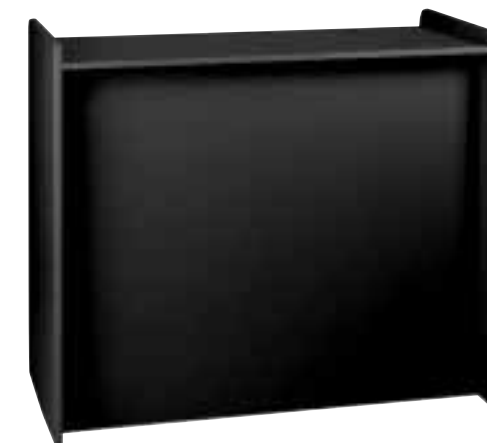


## orion computer kiosk

Black

28"L 28"D 40.5"H – N75079

Pedestal for computer demo with keyboard tray and interior storage. (Computer not included.)



## display counter

Black

24"W 49"L 42"H – N72056



# accessories

We know that every exhibit is different and requires certain pieces that may be hard to find. That's why we offer an assortment of accessories that will meet your needs, from literature racks to bulletin boards to refrigerators and file cabinets. No matter the requirement, your exhibit will always stand out with these striking and functional pieces.

**a. chrome stanchion with 8' retractable belt**

42"H – C220121

**b. chrome sign holder**

Holds 22"x 28" sign – C220118

**c. round literature rack**

17"W 17"L 57"H – N750135  
Revolving black display holds printed materials for easy access from 20 pockets.

**d. flat literature rack**

10"W 55"H – N750136  
Forward-facing black display presents printed materials in six pockets.

**e. chrome coat tree**

C220109

**f. chrome easel**

C220134

**g. chrome bag rack**

C220110

**h. contempo trash receptacle**

8"W 24"H  
Black – N75053  
Aluminum – N75054

**wastebasket**

Wastebasket color may vary.  
C220107



**small refrigerator\***

19"W 19"L 34"H – N75057



**file cabinet with lock**

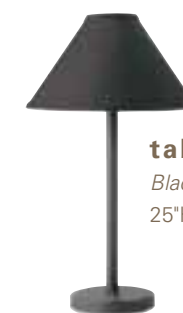
Standard Size

**two-drawer**

15"W 29"L 28"H – N74082

**four-drawer**

15"W 29"L 50"H – N74081



**table lamp\***

Black  
25"H – N75052



**floor-standing bulletin board**

48"W 96"L 78"H – C10201484

\*Note: Electrical power must be ordered separately.  
For ideas on furniture pairings, go to [www.freemanco.com/furniturepairing](http://www.freemanco.com/furniturepairing)

# FURNISHING essentials



Your exhibit space should reflect your company's distinctive look and feel, which is why the furniture you choose to fill it is so important. Freeman Furnishing Essentials has everything you need, with an assortment of superior, professional pieces in eye-catching shapes and styles to suit any budget or design essential. In addition, the quality control standards and in-house maintenance that Freeman adheres to are outstanding, so you always know you're getting the best furniture possible to make your show experience a total success.

Browse through this brochure, and if you don't find what you want, don't worry. We will work with you every step of the way to make sure you get exactly what you're looking for. Our prices are all-inclusive and cover shipping and material handling, with no hidden fees. Also, Freeman has multiple warehouse locations across the country, so delivering your furniture solution is always quick and simple.

**F R E E M A N**